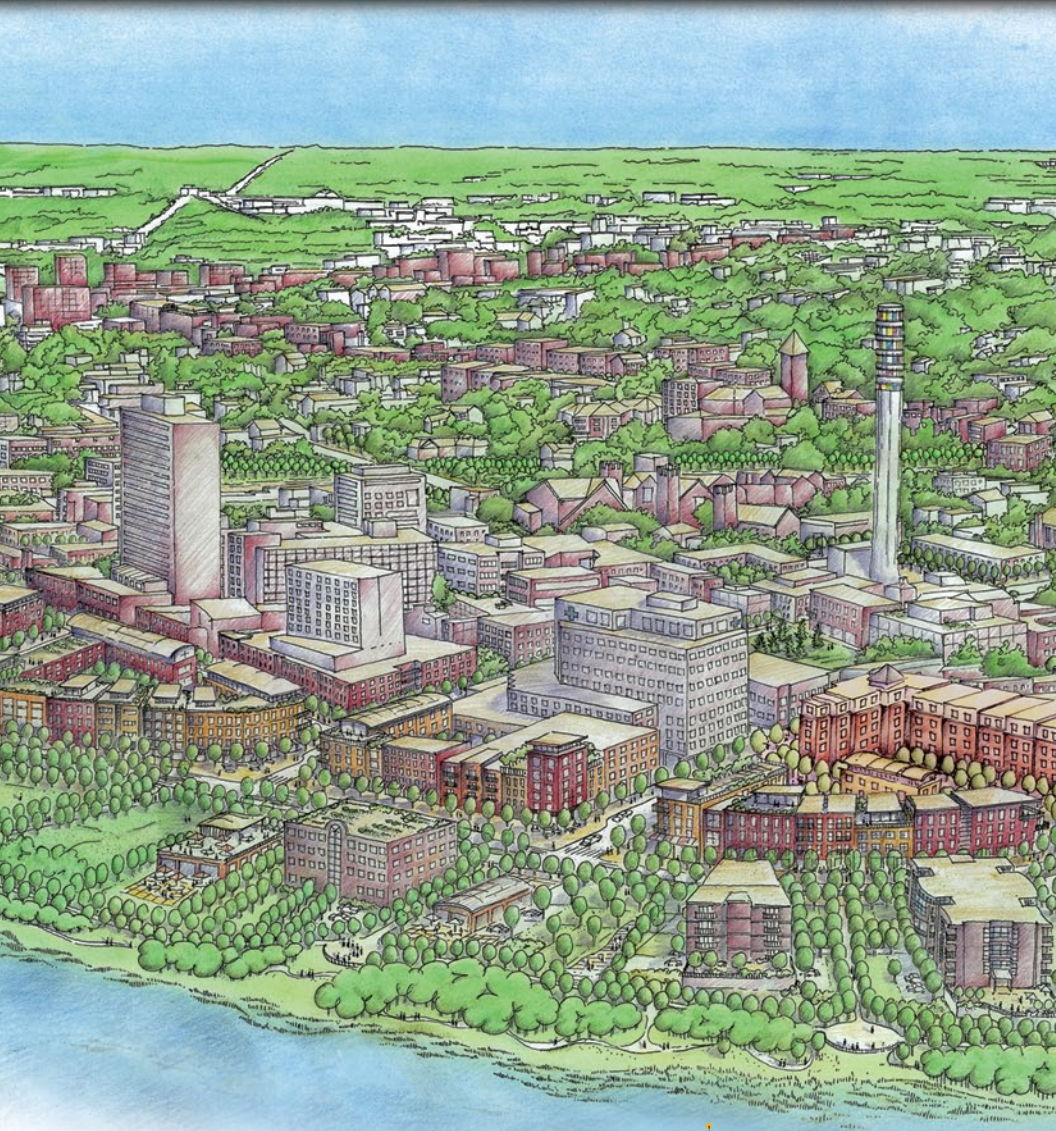


Downtown Moncton's
**DEVELOPMENT
VISION**



Downtown Vision...

What you need to



Overview

Greater Moncton is the largest census metropolitan area (CMA) in New Brunswick with a population of 126,424 and the geographic and cultural hub of the Maritime provinces.

Downtown Moncton has historically been a regional destination and the centre for tourism, commercial, and business activity. Within the boundaries of Downtown Moncton there are over 800 businesses employing over 15,000 people.



The Facts

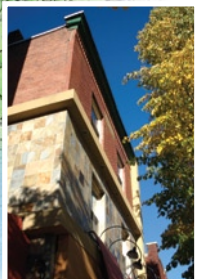
Downtown Moncton's Development Vision is the long term physical plan and concept for Downtown. It presents the intended physical structure that will guide decisions regarding the character of uses, open spaces, and the built form over the next 25 years.

- Downtown provides ideal sites and a superb environment for independent businesses, new businesses and entrepreneurs.
- Downtown Moncton is an environment that welcomes development that is in keeping with its Vision.
- Downtown is the destination for a wide variety of people for different reasons, at different times of the day, whatever the season. It maintains a wide range of attractions with broad appeal and year-round use for residents and tourists alike.
- The core area, south of Main Street to the riverfront, is a mixed-use area characterized by a balanced mix of residential, retail, commercial and civic uses created through the extension of the street grid.



3 Key Objectives

- To maintain and enhance buildings, landmarks, and landscapes that contribute to the heritage character of the area.
- To significantly increase the density of Downtown in order to enhance the quality of urban living and the pedestrian realm, and to create a more sustainable approach to city building.
- To develop a strong retail corridor at grade level that is supported by a mix of uses above. Commercial and residential, new and renovated buildings have the opportunity to support existing connections, and create new ones. This is true for the entire Downtown, and especially significant at the smaller scale of individual buildings, as they are able to enhance access (physical and visual) to landmark sites and important public spaces.



10 Guiding Principles

- 1 Identity and Culture
- 2 Heritage
- 3 Environment
- 4 Movement
- 5 Connectivity
- 6 Partnering
- 7 Role and Function
- 8 Quality Matters
- 9 Process
- 10 Metro Context



Features unique to Moncton that can be captured and enhanced include:

- An attractive and functional main street with a large inventory of historic buildings
- A vibrant creative community and arts scene
- Extraordinary natural features
- Tremendous opportunity for urban infill
- A prosperous region
- Local leadership

10 Big Moves

- 1 Support the long-term environmental and economic viability of Downtown
- 2 Put pedestrians first
- 3 Reintroduce the fine grain grid network of streets and blocks
- 4 Trees, trees, trees
- 5 Reconnect with the Petitcodiac River and Hall's Creek
- 6 Introduce a significant residential population Downtown
- 7 Enhance and increase public places
- 8 Build upon the unique existing cultural and landscape heritage through the creation of heritage districts
- 9 Create grand avenues
- 10 Let Downtown be a downtown

Information

moncton.ca
downtownmoncton.com